

PRRA SERIES AUTOMATIC ROTARY RING TECHNOLOGY

ROTARY RING
PRRA-2100



ROTARY RING
PRRA-4000



www.phoenixwrappers.com



SEMI-AUTO TURNTABLE
STRETCH WRAPPERS



ROTARY ARM STRETCH
WRAPPERS



CUSTOM
AUTOMATED SYSTEMS



HIGH SPEED AUTOMATED
STRETCH WRAPPERS



FULLY INTEGRATED
PACKAGING LINES

PRRA SERIES

AUTOMATIC ROTARY RING TECHNOLOGY

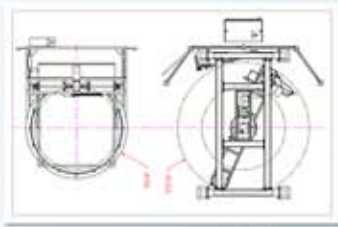


UP TO 50% FILM SAVINGS

The Rotary Ring's unique cycle saves film that conventional wrappers apply unnecessarily due to design limitations.

Tens of thousands of dollars in annual film saving can be realized.

With PRRA Rotary Ring reducing film costs by as much as 50%, payback over conventional wrappers can be had in as little as 3 years.



COMPACT FOOTPRINT

The PRRA takes 25% less space than conventional rotary arm style wrappers. Designed to be the smallest footprint in the industry, the PRRA will solve many space constraint applications where fitting into an existing space was the main issue.

Do not waste premium floor space. The PRRA fits where conventional wrappers can't fit.



MORE FLEXIBILITY

Besides the std. wrap cycle available with conventional wrappers, the PRRA Rotary Ring wrapper can perform cycles like:

Top Banding: Applies layers of film to the top only for local shipments or on stable loads that do not need full wrap.

Double Stacked Cycle: Wraps 2 loads individually which enter the wrapper stacked one on top of the other.



HIGH SPEED RELIABILITY

Designed specifically for 24 – 7 operation due to the PRRA Rotary Ring's low mass rotation system.

The PRRA works effortlessly as it rotates only what is required...the carriage.

Up to 30% faster cycle time with the same RPM due to its time saving wrapping sequence. Fewer revolutions results in less wear & tear and increased reliability.

NOTHING BEATS THE BEST IN CLASS!

FASTER:

Rotary Ring design is much faster than conventional turntable and rotary arm designs.

USER FRIENDLY:

Minor assembly results in quick installation, and commercially available parts keep things simple.

ULTIMATE CONTROLS:

Simple yet powerful controls provides flexibility and film savings.

REDUCED MAINTENANCE:

Simple design with few moving parts reduces system stress and strain while eliminating unnecessary revolutions.



GENERAL SPECIFICATIONS

Load Size	48" x 50"
Load Weight	Unlimited
Load Height	80"
Power Req.	230 Vac. 20 Amp

Controls

3 Wrap Programs	Std. Wrap & Double Wrap Top Banding
Up/Down Speeds carriage	Separate
Top & Bottom Wrap Counters	Separate 1-9 count
Motor Controls	Variable Frequency Drives

Warranty

3 years-All Parts / 10 years-Frame
Lifetime warranty on Pre-stretch Rollers

Machine

	PRRA-2100	PRRA-4000
Speed (variable)	21 RPM	40 RPM
Load Weight	Unlimited	Unlimited
Max Load Size	48"x50"	48"x50"
Production Cap.	65-70/hr.	90-120/hr.

*Specifications subject to change without notice

Phoenix...**Best in Class** performance
at a **Best in Class** price!

www.phoenixwrappers.com

Get the Facts and Compare!

(514) 956-1525