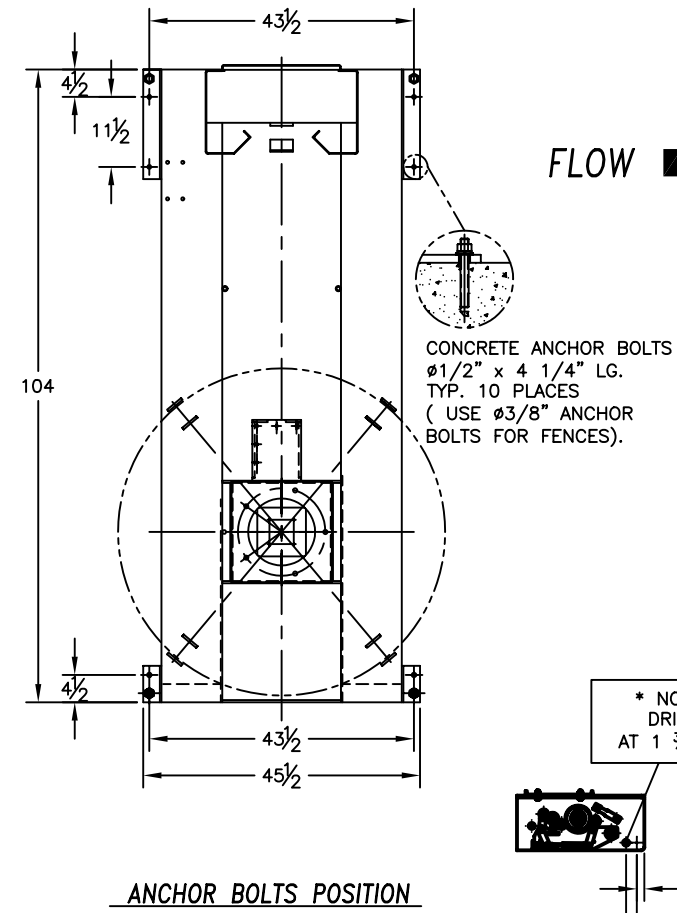
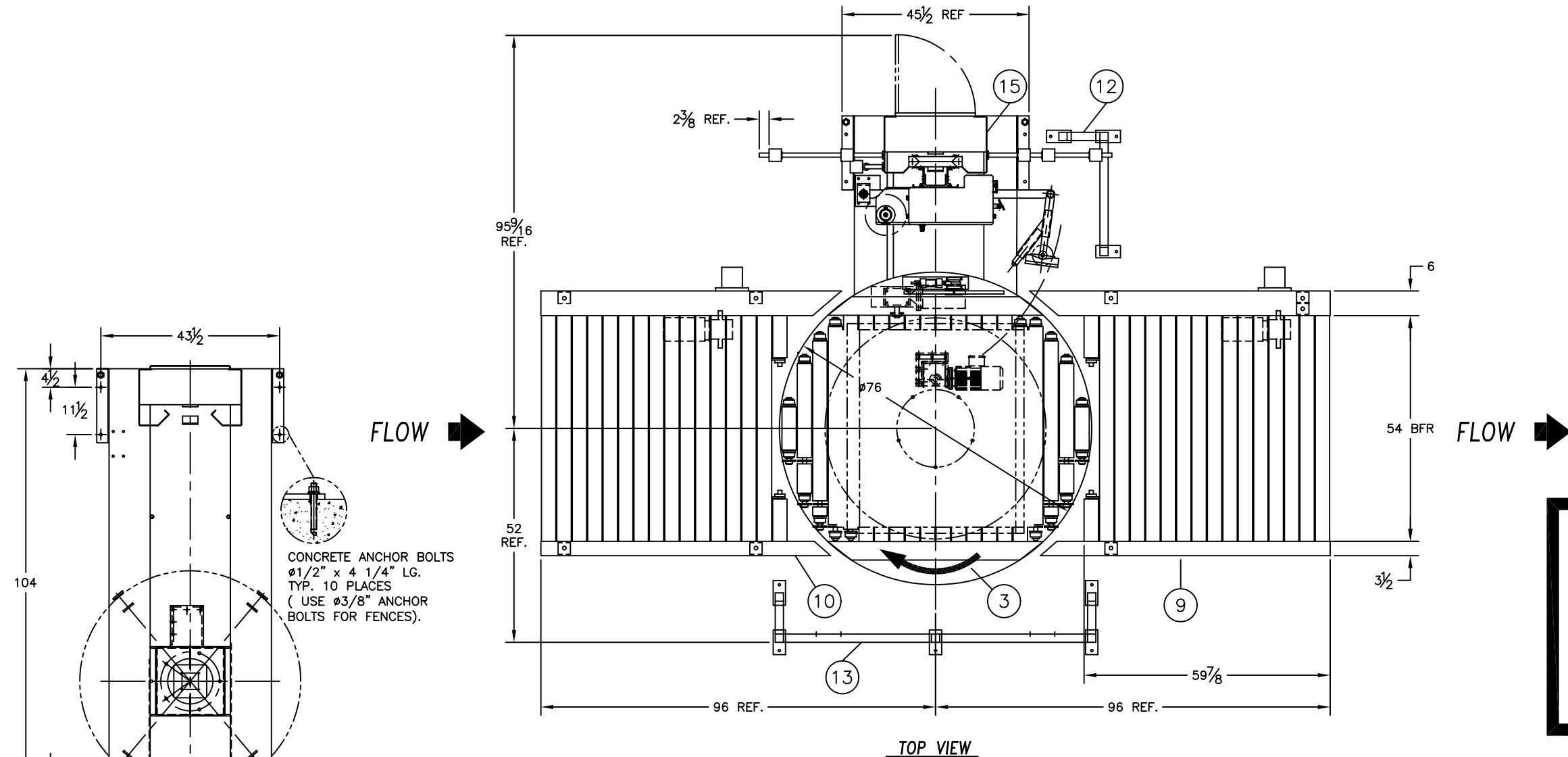


REF	ITEM	DESCRIPTION	QTY	UNIT
1	F0741000	H.D. BASE & STD TOWER ASSEMBLY	1.000	EACH
2	R052-3000-1810	CARRIAGE ASSY (250%)	1.000	EACH
3	E6434000	76" TURNTABLE ASSEMBLY (3.5x3.75)	1.000	EACH
4	E9594201	RING GEAR SPACER (1 3/16)	8.000	EACH
5	B6908900	PROXIMITY SENSOR BRACKETS	1.000	EACH
6	D8021100	SWING CUT/SEAL ASSEMBLY	1.000	EACH
7	C152-2700-0001	FILM CLAMP ASSY	1.000	EACH
8	E6438900	ELECTRICAL BRACKETS ASSEMBLY	1.000	EACH
9	F0745100	CONVEYOR ASSY (3.5x3.75x5FT) CONT	1.000	EACH
10	F0745200	CONVEYOR ASSY (3.5x3.75) CONT	1.000	EACH
11	99105500	LEG EXTENSION ASSEMBLY-20	8.000	EACH
12	D8021510	RAPTOR FRONT GUARD RAIL	1.000	EACH
13	D8021520	RAPTOR BACK GUARD RAIL	1.000	EACH
14	E9992302	CARRIAGE STOPPER	1.000	EACH
15	F0749000	ELECTRICAL ASSEMBLY	1.000	EACH
16	SMFA09071	WASHER FLAT 0.75	16.000	EACH
17	C0664101	SPACER	4.000	EACH



ITW Muller APPROVAL DRAWINGS

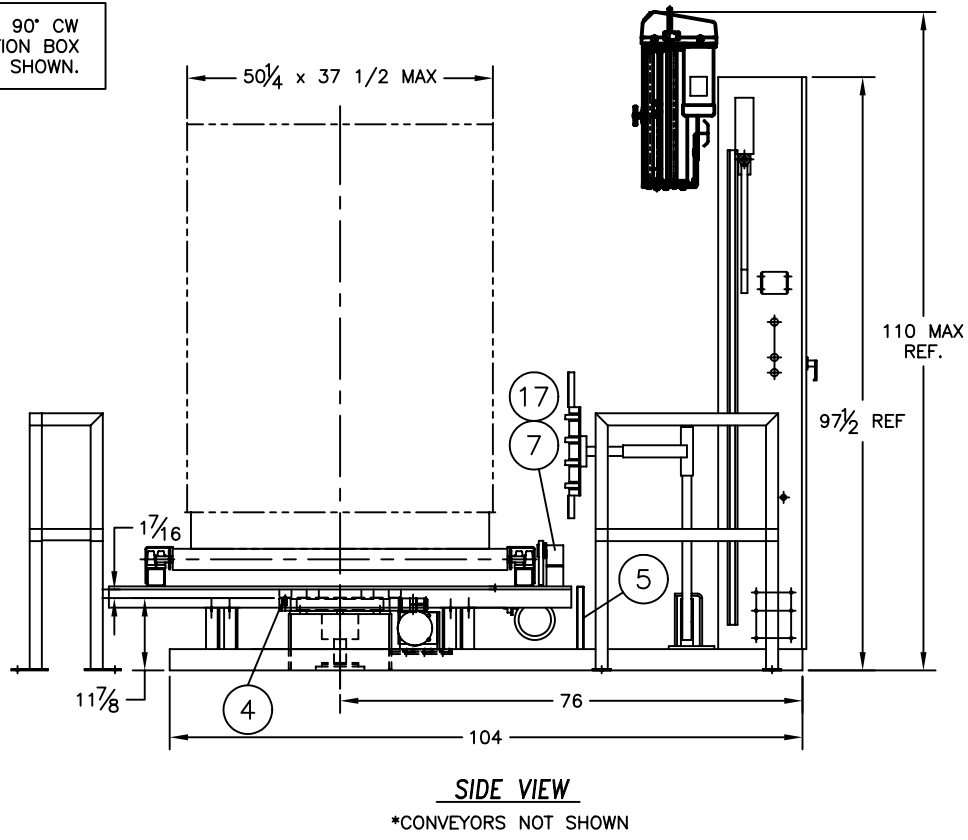
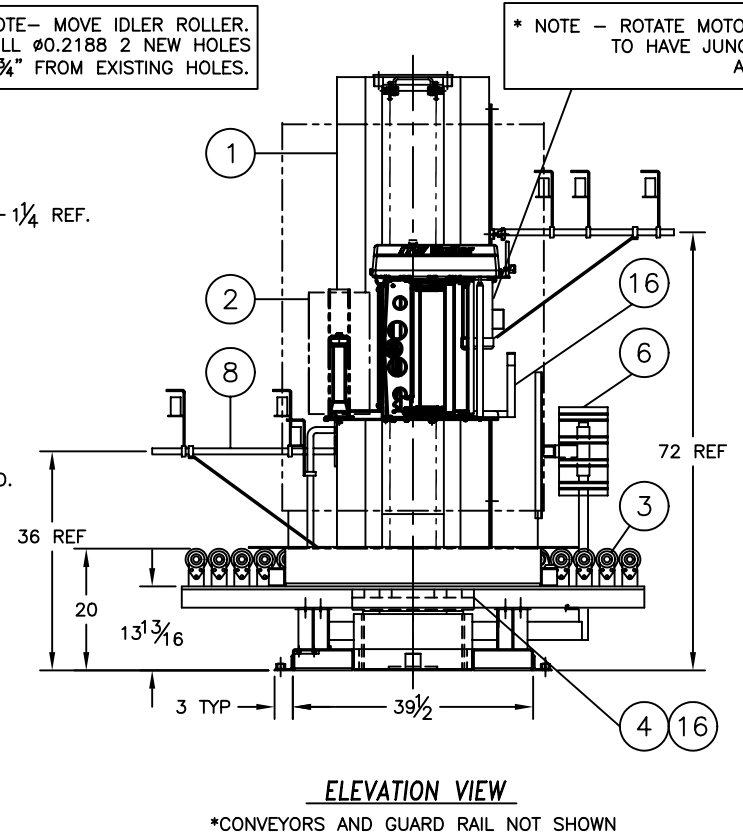
APPROVED AS SUBMITTED

APPROVED AS NOTED

NOT APPROVED

DATE: BY:

- NOTES:
- 1) CONVEYORS ARE SUPPLIED BY ITW MULLER.
 - 2) 20" STRAIN-GAUGE SG4000 (250% PRESTRETCH).
 - 3) CAPACITY: 35 TO 40 LOADS PER HOUR BASED ON A 48" LOAD HEIGHT, 4 TOP & 4 BOTTOM WRAPS AT A 30 FT/MIN CONVEYOR SPEED.
 - 4) MAXIMUM TURNTABLE SPEED: 16 RPM.
 - 5) INSTALLATION REQUIREMENTS:
 - ELECTRICAL: 480 VAC, 60Hz, 3 PHASES
 - PNEUMATIC: 80 PSI, 3 CFM.
 - 6) LOADS MUST BE CENTER REFERENCED ON THE CONVEYOR.
 - 7) MACHINE MUST BE INSTALLED ON A FIRM FLOOR AND PROPERLY LEVELLED.
 - 8) PAINT SCHEME : ITW STANDARD DARK BRONZE
 - 9) MACHINE LOAD DIMENSIONS SPECIFICATIONS: (AS PER RFQ)
 - MINIMUM WIDTH: 40", MAXIMUM: 40"(MACHINE MAXIMUM:50")
 - MINIMUM LENGTH: 48", MAXIMUM: 48"(MACHINE MAXIMUM:52")
 - MINIMUM HEIGHT: 28", MAXIMUM: 48" (MACHINE MAXIMUM: 80")
 - 10) MAXIMUM LOAD DIAGONAL: 72".



NO.	REVISION	DATE	BY	APP'D	ECN#
RAPTOR 1525CN (76 DIA 3.5x3.75)					
SCALE: 1:16	DATE: 04/15/09	DWG. NO. F0740000	REV.		
DRAWN BY: Paul Mortel					
CHECKED: ** PENDING **					
TOLERANCES UNLESS SPECIFIED:		LAST REVISION DATE:			
DIMENSIONS ARE IN INCHES		CAD FILENAME: F0740000.DWG			
FRACTIONS 1/16		ISSUED:			
DECIMAL ± 0.006		DATE ISSUED:			
ANGLES ± 1°					